



FIBER LASER CUTTING MACHINES, CO2 LASER &
CNC ROUTER **MACHINES** 



Director's Desk

Progress for me has never been a dream. It has always been a distant reality and once one milestone is achieved, there is always another one waiting to be crossed.

"I take this opportunity to thank our valued customers, whose continued patronage and confidence in our products inspires us to extend the best of our services. We move ahead with the following values embedded in our working. **"Innovate, Imbibe, Excel Shift the Paradigm..."**

It is with this belief that We started Aaradhana Machineries Pvt. Ltd. in 2016, a company that was in the business of Laser, Wood & Stone Router Machines, Aaradhana Machineries Pvt. Ltd. became a prominent name in its business segment, but like every entrepreneur sticks to their dream, I always wanted to push my company to more prosperous milestones. More than being a global player, I always perceived my company as a unit that could make a difference with its quality and competitively priced products. Taking a path less traveled, we expanded AaradhanaMachineries into production, a highly sensitive business that requires a high amount of technical know-how, expertise and specialized knowledge.

Overcoming challenge after challenge with the support of my brilliant team, we have been successful in bringing AaradhanaMachineries to a new milestone of global recognition.

The journey of AaradhanaMachineries is never ending. But with the support of my team and clients, I am confident that the company will continue to scale milestones of excellence for years to come.

Dinesh Vyas
(Managing Director)

Content

About us	P01	H Enclosed High Speed Fiber Laser Cutting Machine	P13
Store Locations	P02	E High Speed Fiber Laser Cutting Machine	P14
Sharpen Tools	P03	F Fiber Laser Cutting Machine	P15
Laser Cutting Bed-Blade Board AR-1325	P04	Exchange Platform Fiber Laser Cutting Machine	P16
Laser Cutting Machine AR-1390	P05	Dual Use Metal Fiber Laser Cutting Machine	P17
Wood CNC Router Machine AR-1325	P06	Enclosed Plate Tube Integrated Laser Cutting Machine	P18
Double Head Stone Router Machine AR-3015	P07	Automatic Coil Laser Cutting Machine	P19
CNC Wood Router Double Head AR-1530	P08	Pipe Special Fiber Laser Cutting Machine	P20
Wood Router with Rotary AR-1325R	P09	Fiber Welding Machine	P21
Fiber Marking Machine	P10	Cutting Parameters	P22
Laser & CNC Machine spare Parts	P11	Exhibitions	P23
Product Center	P12	Installations	P24



About

We, at Aaradhana Technologies are India's leading creators of CNC and Laser Cutting Machines that are used for the dissection and cutting of metal, marble and other strong materials that require specialized equipment for shaping.

All our machines are built in accordance with industry safety standards and attention to durability. Our machines are known for their long life, ease of maintenance and overall performance.

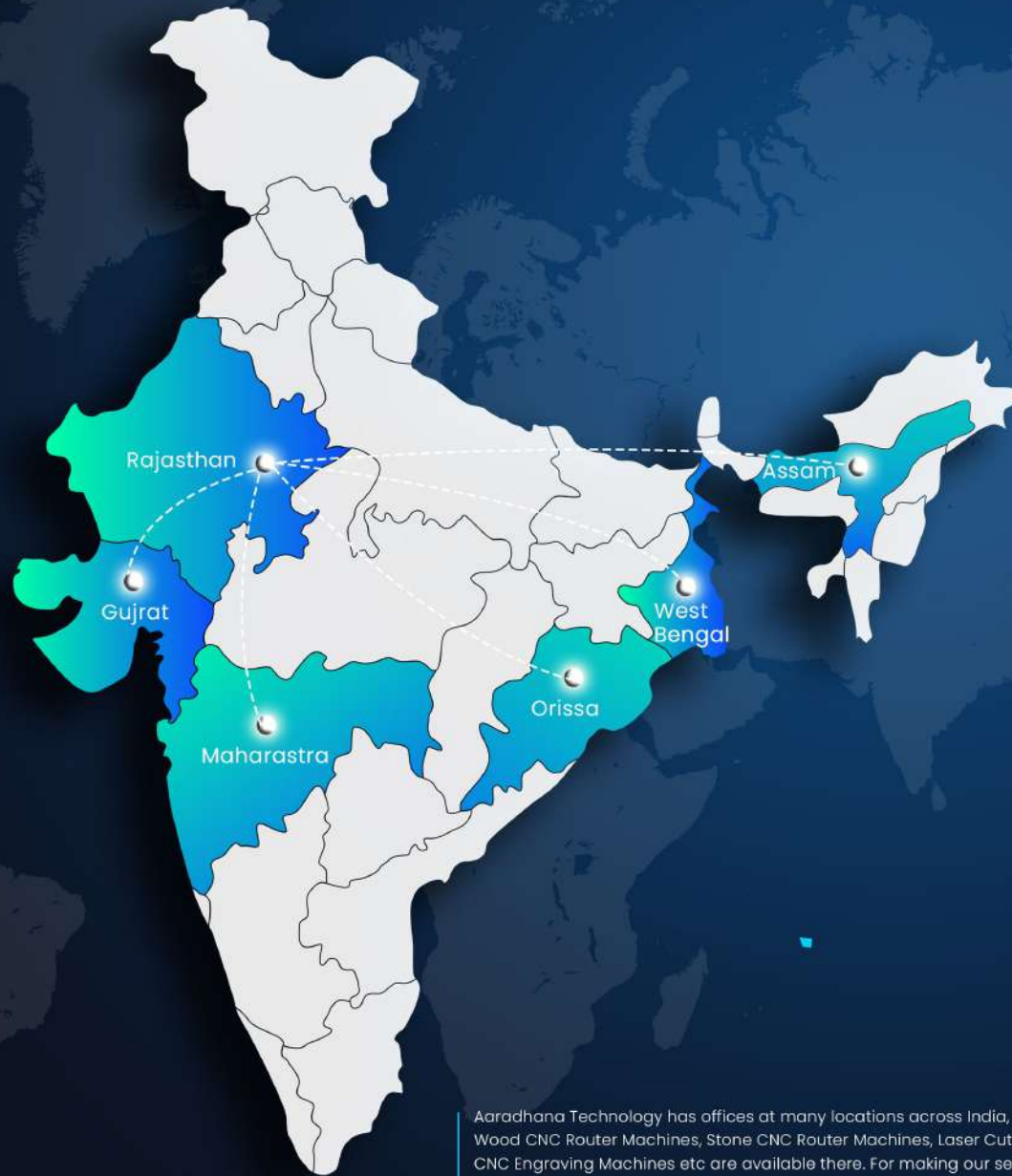
Why Choose us

All our machines are built in accordance with industry safety standards and attention to durability.

- Financial Responsibility to Our Clients
- Superior Quality and Craftsmanship
- Quality and Value to the Projects We Deliver
- Highest Standards in Cost Control
- On Time and on Budget
- Real Focus on Customer Satisfaction



Store Locations in INDIA



Aaradhana Technology has offices at many locations across India, Our all products Wood CNC Router Machines, Stone CNC Router Machines, Laser Cutting Machines, CO2 Laser Machines, CNC Engraving Machines etc are available there. For making our services available and easily accessible to our customers we have opened these branches across India.

Odisha | West Bengal | Maharashtra | Assam | Gujarat | Rajasthan.

A Worker must first
Sharpen his Tools
if he wants to do well ■

Laser Cutting Bed-Blade Board AR-1325



Configuration

Reci laser tube 130W/300W | Focus len | Reflector lens Water cooling system
Honeycomb work table | Exhaust fan | Software in English | English Manual
Pump | Installation and operation | Plywood package.

Applicable Industries

Suitable to the large format cutting/engraving of acrylic, plexiglass, stencil, rubber, plastics, synthetic material, decoration, architecture, furniture, wood and bamboo products, PC/PVC/PP, sound absorbed panel and so on.

Machine Features

- Really useful in cutting, engraving on large format;
- Adop stable working chassis, make sure the working steady & accurary;
- Linear guide, transportation of accurate gear to achieve high precision;
- The synchronous movement of laser tube and laser head, shorten laser path, decrease the laser attenuation, to ensure cutting effectively and at the same time save the energy;
- The blowing and exhaust system dispose the dust and smoke during cutting, avoid the fire then protect the material;
- The working format can be made according to customer's request.

Technical Parameters

Model	AR-1325
Working Area	1300mm*2500mm
Laser Power	80W-300W
Cutting Speed	0-800mm/s
Reposition Accuracy	<0.02mm
Working Voltage	220±10% 50Hz (60Hz)
Cooling Mode	Enforced Water Cooling System
Whole Machine Power	2500W
Whole Machine Weight	600KG
Dimension	3000mm*1600mm*1050mm



Laser Cutting Machine AR-1390



Machine Character

- Highly intelligent control, high precision positioning, smooth edges, flexible in cutting different designs.
- Non touching process of cutting, engraving ensures high quality cutting effects, without damage to products.
- Especially suitable for cutting or engraving on Acrylic, Bamboo, MDF, Plywood, Arts Crafts, Greeting Cards, Clothing, Logo, Buttons etc.

Machine Parts



Fan



Chiller



Controller



Cutting Head

Technical Parameters

Model	AR-1390, AR-1410
Process Area	1300mm*900mm, 1400mm*1000mm
Laser Type/Power	Hermetic and detached CO2 laser tube 80W/100W/130W
Cutting Speed	0-800mm/s
Engraving Speed	0-1000mm/s
Reposition Accuracy	<0.02mm
Supported Formats	DXF/PLT/BMP/AI/HML/DST
Cooling System	Professional industrial water cooling and protection system CW-5000
Whole Power	1500W
Machine Weight	380KG
Work Temperature	1°C-45°C
Machine Dimention	1900*1650*1150mm



Wood CNC Router Machine AR-1325



Machine Features

- Welded structure by thick profiled steel, stabilized under high temperature, ensures minimum distortion, excellent rigidity and powerful strength.
- Y- Axis with double motor driving ensures stable and smooth movement of the machine.
- High precision rack gear transmission ensures fast speed and high accuracy.
- Optimized mechanical and electrical design with well-selected brand parts minimizes Breakdown rate.
- Spindle with high power enables powerful cutting strength.
- Function of continuous working at stop point by power failure.

Applicable Industries & Materials

- Really useful in cutting, engraving on large format; Wood working wooden door and furniture, windows, tables and chairs, cabinets and panels, 3D wave plate, MDF. Computer Desk, Musical Instruments etc.
- Die Industry: Copper Sculpture, Aluminum engraver, Metal Molds, Plastic Sheetting PVC. etc:
- Decoration: Acrylic, Density Board, Articiul Stone, Organic Glass, Soft Metals like Aluminum.

Technical Parameters

Model	AR-1325, AR-1530
Working Area (X*Y*Z)	1300mm* 2500mm, 1500mm*3000mm
Working Table	Aluminum Profile Working Table with T-Slot PVC Plate, vaccum bed
Spindle	3.5, 4.5, 6KW Air/Water-Cooling Spindle
Control System	DSP Rich Auto A 11, NK105
Resolution	+ _ 0.05 mm
Spindle Speed	18000-24000 rpm
Tool Diameter	3.175 mm, 6.0mm , 12.7mm
Working Voltage	AC220v/50hz, 380v
Engraving Speed	12000mm / min
Feeding Height	220mm
Working Dictate	HPGL , G Code



Double Head Stone Router Machine AR-3015



Applicable Industries & Materials

- Mainly Applied to tombstone processing industry, home decoration industry, arts & crafts, glass, ceramic, granite, marble, white marble, crystal, blue stone, sandstone, block brick, floor slab etc.

Machine Features

- Precise traveling of Y-axis driven by double motors, bigger motors ensure stable performance of machine.
- Configured with high quality stainless steel water tank and automatic cooling water supply system.
- Configured with two water nozzles connect into a bigger water pump, to cool the collect.
- Profiled steel welded lathe bed, stabilizing treated under artificial prescription ensures minimum distortion, excellent rigidity, & vigorous strength.
- High precision rack gear transmission ensures high accuracy, fast speed and strong power.

Technical Parameters

Model	AR-3015/2030
XY Movement	Rack and Pinion, Gearwheel Drive
Z Movement	Ball Screw Drive
Spindle	5.5kw water-Cooler Double Spindle
Spindle Speed	24000 RPM
Drive Motor	Servo (Optional Japanese)
Invertor	Delta
Controllar	NK105



CNC Wood Router Double Head AR-1530



Machine Features

- Welded structure by thick profiled steel, stabilized under high temperature, ensures minimum distortion, excellent rigidity and powerful strength.
- Y- Axis with double motor driving ensures stable and smooth movement of the machine.
- High precision rack gear transmission ensures fast speed and high accuracy.
- Optimized mechanical and electrical design with well-selected brand parts minimizes Breakdown rate.
- Spindle with high power enables powerful cutting strength.
- Function of continuous working at stop point by power failure.

Applicable Industries & Materials

- Really useful in cutting, engraving on large format; Wood working wooden door and furniture, windows, tables and chairs, cabinets and panels, 3D wave plate, MDF. Computer Desk, Musical Instruments etc.
- Die Industry: Copper Sculpture, Aluminum engraver, Metal Molds, Plastic Sheetting PVC. etc:
- Decoration: Acrylic, Density Board, Articiul Stone, Organic Glass, Soft Metals like Aluminum.

Technical Parameters

Model	AR-1530
Working Area (X*Y*Z)	1500mm*3000mm
Working Table	Aluminum Profile Working Table with T-Slot PVC Plate, vaccum bed
Spindle	3.5, 4.5, 6KW Air/Water-Cooling Spindle
Control System	DSP Rich Auto A 11, NK105
Resolution	+ _ 0.05 mm
Spindle Speed	18000-24000 rpm
Tool Diameter	3.175 mm, 6.0mm , 12.7mm
Working Voltage	AC220v/50hz, 380v
Engraving Speed	12000mm / min
Feeding Height	220mm
Working Dictate	HPGL , G Code



Wood Router with Rotary AR-1325R



Machine Features

- Welded structure by thick profiled steel, stabilized under high temperature, ensures minimum distortion, excellent rigidity and powerful strength.
- Y- Axis with double motor driving ensures stable and smooth movement of the machine.
- High precision rack gear transmission ensures fast speed and high accuracy.
- Optimized mechanical and electrical design with well-selected brand parts minimizes Breakdown rate.
- Spindle with high power enables powerful cutting strength.
- Function of continuous working at stop point by power failure.

Applicable Industries & Materials

- Really useful in cutting, engraving on large format; Wood working wooden door and furniture, windows, tables and chairs, cabinets and panels, 3D wave plate, MDF. Computer Desk, Musical Instruments etc.
- Die Industry: Copper Sculpture, Aluminum engraver, Metal Molds, Plastic Sheetting PVC. etc:
- Decoration: Acrylic, Density Board, Articiul Stone, Organic Glass, Soft Metals like Aluminum.

Technical Parameters

Model	AR-1325R
Working Area (X*Y*Z)	1300 * 2500mm, Rotary Dia 250*2500mm
Working Table	Aluminum Profile Working Table with T-Slot PVC Plate, vaccum bed
Spindle	3.5, 4.5, 6KW Air/Water-Cooling Spindle
Control System	DSP Rich Auto A 11, NK105
Resolution	+ _ 0.05 mm
Spindle Speed	18000-24000 rpm
Tool Diameter	3.175 mm, 6.0mm , 12.7mm
Working Voltage	AC220v/50hz, 380v
Engraving Speed	12000mm / min
Feeding Height	220mm
Working Dictate	HPGL , G Code



Fiber Marking Machine AR-20,30,50

Machine Features

- High Precision
- Fast Speed
- Low Maintenance
- Low Energy consumption
- Stable Performance
- long Life



Applicable Industries & Materials

- The fiber laser machine can marking meta (including the rare metals) such as Steel, Titanium, copper etc, and some of nonmetal such as Nylon, Light Button, ABS, PVC, PES
- The Field with the higher requirement for depth and smoothness such as Clock Industry, Mould Industry, Bitmap Making and so on. The field such as electronic component electrical products. it industry, auto-parts metal tools, accurate instruments, present and adornment, medical instrument, high or low voltage electric equipment etc.

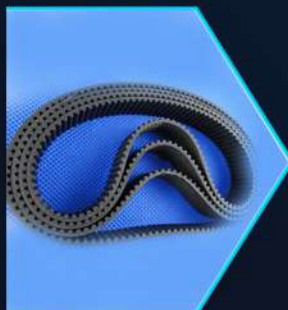


Technical Parameters

Model	AR-20,30,50
Processing Size(L*W)	100*100-200*200mm
Support Format	BMP, JPEG, GIF, PLT, PCX, TIFF, TAG, CDR, DWG, DXF, HPG, AL etc.
Max. Marking Speed	7000 mm/s
Laser Power	10/20 w
Marking Depth	0.01-0.3mm
Dimensions	800*650*1450mm
Positioning Accuracy	0.01 mm
Laser Type	Fiber
Laser Wave Length	1064 nm
Cooling System	Air Cooling
Power Supply Voltage	AC 110V/220V+-10%/380V, 50/60Hz



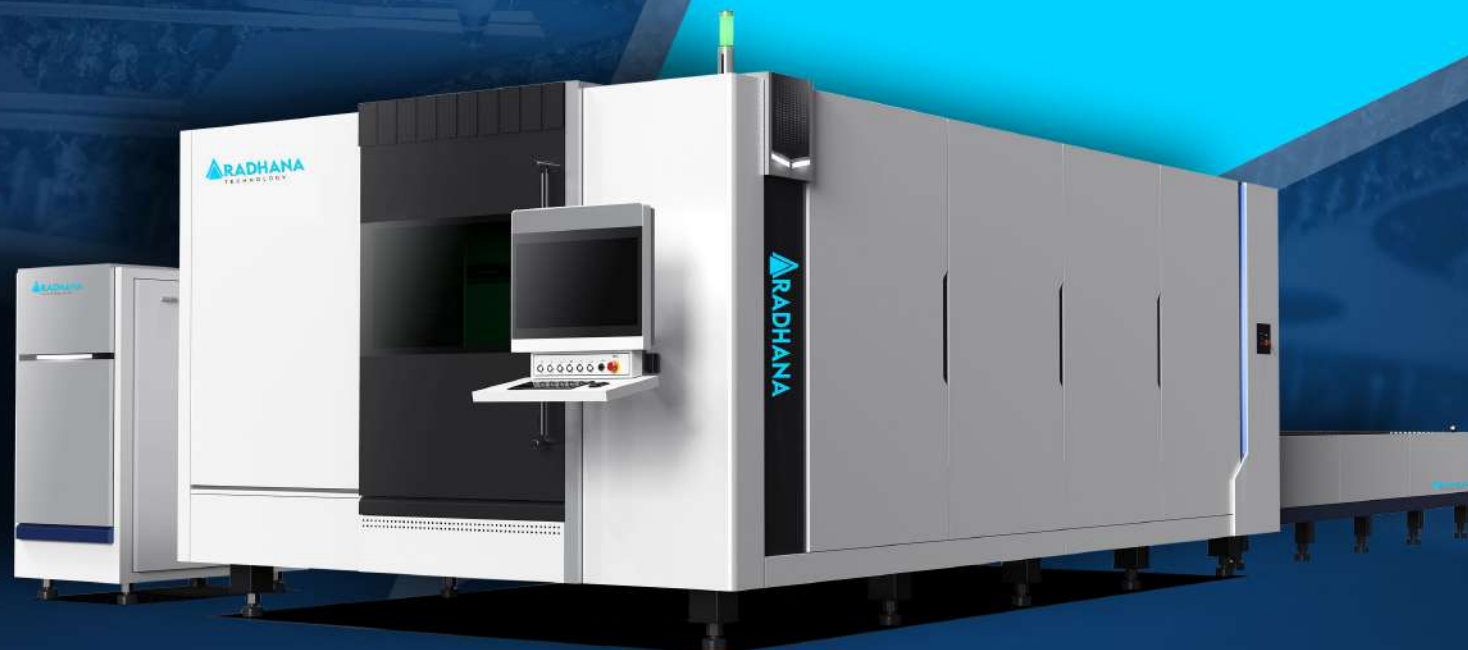
Laser & CNC Machine Spare Parts



- High Precision
- Highly Intelligent
- Safe and Durable
- Strong Technical Research and Development Strength
- Standardised Scientific Management
- Excellent Product Quality
- Customer Centric Service Concept

PRODUCT CENTER

H Enclosed High Speed Fiber Laser Cutting Machine

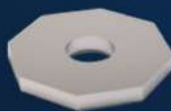
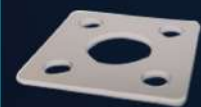


Features

- Close-Loop Laser Cutting Control System, auto focus, high-speed piercing and automatic tracing- edge function.
- Powerful Cutting Technology database to achieve faster processing Efficiency and excellent cutting quality.



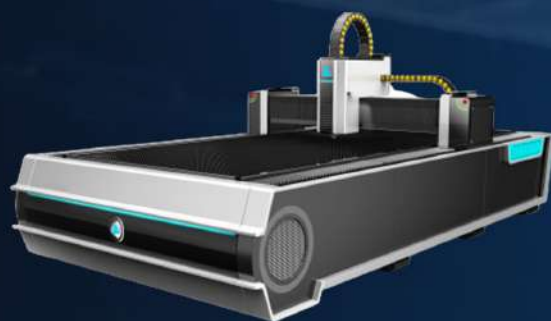
Sample Display



Specification

Model	AR-3015	AR-4020	AR-6025
Cutting Range	3000*1500m	4000*2000mm	6000*2500mm
Laser power	1000-20000W	1000-20000W	1000-20000W
Repositioning Accuracy	0.02mm	0.02mm	0.02mm
Max. Moving Speed	140m/min	140m/min	140m/min

E High Speed Fiber Laser Cutting Machine

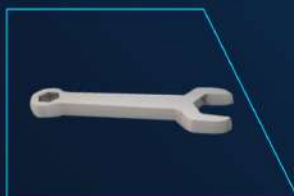


Features

- High Rigidity, Heavy Chasis reducing the vibration generated during high-speed cutting greatly.
- High Performance cast aluminium guide rail, after infinite element analysis, realizes highly accelerated speed circular arc cutting.



Sample Display



Specification

Model	AR-3015E	AR-4020E	AR-6025E
Cutting Range	3000*1500mm	4000*2000mm	6000*2500mm
Laser power	1000-20000W	1000-20000W	1000-20000W
Repositioning Accuracy	0.02mm	0.02mm	0.02mm
Max. Moving Speed	140m/min	140m/min	140m/min



F Fiber Laser Cutting Machine



Features

- Open Workable, Simple operation and small space occupation.
- Adopt high precision linear guide rail to ensure the precision operation of the equipment.



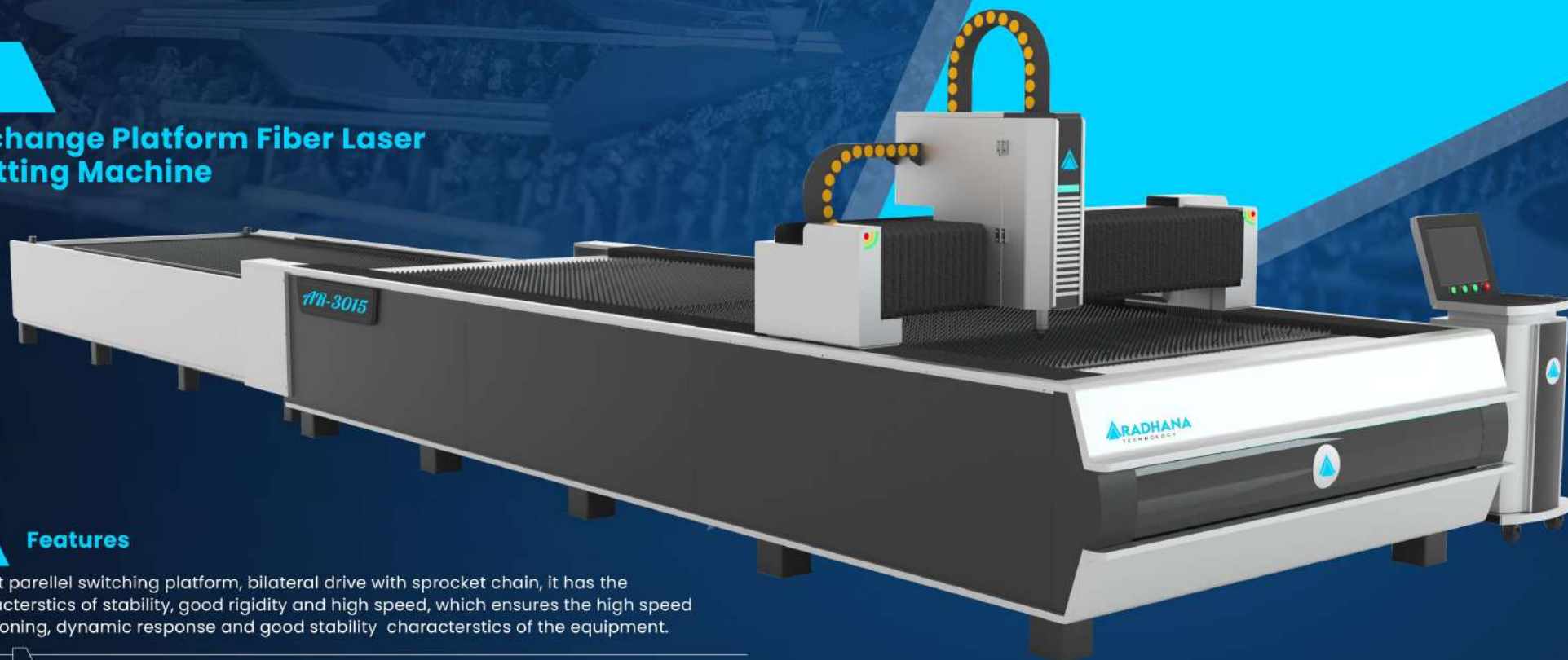
Sample Display



Specification

Model	AR-3015F	AR-4015F	AR-6015F
Cutting Range	3000*1500mm	4000*1500mm	6000*1500mm
Laser power	1000-1500W	1000-1500W	1000-1500W
Repositioning Accuracy	0.02mm	0.02mm	0.02mm
Max. Moving Speed	140m/min	140m/min	140m/min

Exchange Platform Fiber Laser Cutting Machine



Features

- Adopt parallel switching platform, bilateral drive with sprocket chain, it has the characteristics of stability, good rigidity and high speed, which ensures the high speed positioning, dynamic response and good stability characteristics of the equipment.



Sample Display



Specification

Model	AR-3015	AR-4020	AR-6025
Cutting Range	3000*1500mm	4000*2000mm	6000*2500mm
Laser power	1000-20000W	1000-20000W	1000-20000W
Repositioning Accuracy	0.02mm	0.02mm	0.02mm
Max. Moving Speed	140m/min	140m/min	140m/min

Dual use Metal Fiber Laser Cutting Machine



Features

- Saddle-shaped Pipe type support beam is with high precision calibration, no deformation during 12 m pipe cutting.
- Self centering jig system ensures stable process of conveying pipes, so that it can ensure high accuracy and high quality of products.



Sample Display



Specification

Model	AR-3015	AR-4020	AR-6025
Cutting Range	3000*1500m	4000*2000mm	6000*2500mm
Laser power	1000-20000W	1000-20000W	1000-20000W
Repositioning Accuracy	0.02mm	0.02mm	0.02mm
Max. Moving Speed	140m/min	140m/min	140m/min

Enclosed Plate Tube Integrated Laser Cutting Machine



Features

- Fully enclosed productive structure to make operation safer.



- Multi function cutting, one machine for dual use, better compatibility of plate and pipe.



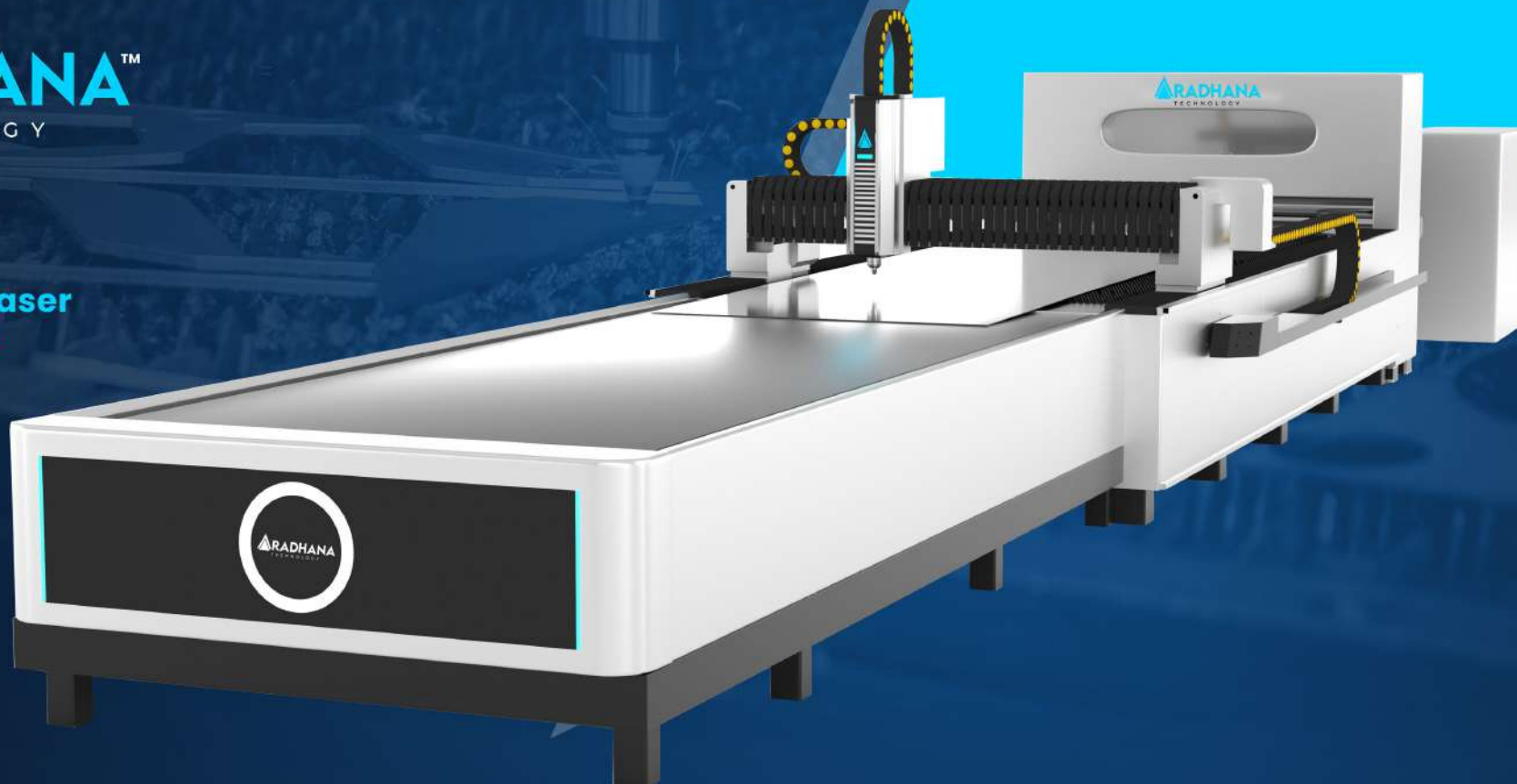
Sample Display



Specification

Model	AR-3015	AR-4020	AR-6025
Cutting Range	3000*1500m	4000*2000mm	6000*2500mm
Laser power	1000-20000W	1000-20000W	1000-20000W
Repositioning Accuracy	0.02mm	0.02mm	0.02mm
Max. Moving Speed	140m/min	140m/min	140m/min

Automatic Coil Laser Cutting Machine



Features

- Simple material receiving without affecting cutting.



- Automatic uncoiling, leveling, feeding and cutting.



Sample Display



Specification

Model	AR-3015A
Laser power	1000*3000w
Repositioning Accuracy	0.02mm
Working Area	3000mm*1500mm
Max. Linkage Speed	140m/min

Pipe Special Fiber Laser Cutting Machine

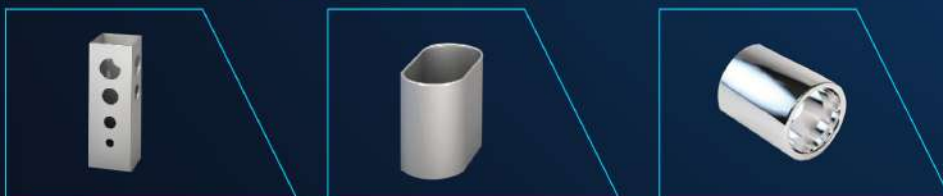


Features

- High precision pipe material, achieve Sensorless and efficient detection, achieve full meter section cutting precision position deviation within 0.15mm.
- Processing market conventional circular tube, square tube, rectangular tube.



Sample Display



Specification

Model	AR-60200
Laser power	1000*20000w
Repositioning Accuracy	0.02mm
Cutting Range	2000mm-12000mm
Max. Moving Speed	100m/min

Fiber Welding Machine



Features

- Smooth & Beautiful weld, reduce the subsequent grinding process, save time and cost. welding workpiece without deformation, no welding scar, welding firm.
- Less material for laser welding, long life. more safe and environmental.



Sample Display



Specification

Material	Aluminium	Stainless Steel	Carbon Steel	Galvanized Sheet
1000W	1.0	1.5	1.5	1.2
1500W	1.2	2.0	2.0	1.5
2000W	2.5	3.0	3.0	2.5

Cutting Parameters

Material: Carbon Steel (SUS304)

Thickness	1000W	1500W	2000W	3000W	4000W	6000W	8000W	10000W	12000W	15000W	20000W
	Speed m/min	Speed m/min	Speed m/min	Speed m/min	Speed m/min	Speed m/min	Speed m/min	Speed m/min	Speed m/min	Speed m/min	Speed m/min
1	24-26	30-38	34-39	37-42	40-50	43-52	48-54	48-54	50-55	55-60	61-72
2	8-9	12-14	16-17	18-20	21-23	23-29	26-35	28-35	28-40	30-42	32-45
3	2.8-3.0	2.9-3.2	3.4-3.6	4.0-4.2	5.0-5.2	6-10	10-20	16-25	18-30	20-30	25-35
4	2.2-2.4	2.4-2.6	3.1-3.2	3.3-3.5	3.5	3.5-3.7	3.5-3.7	3.5-5.5	3.5-5.5	3.5-5.5	4.0-6.0
5	1.5-1.7	1.8-2.0	2.7-3.0	2.8-3.0	3.0-3.2	3.2-3.3	3.2-3.3	3.3-4.5	3.3-4.8	3.3-4.8	3.5-5.0
6	1.2-1.4	1.6-1.8	2.0-2.2	2.3-2.5	2.6-2.8	2.6-2.8	2.6-2.8	3.0-4.2	3.0-4.2	3.0-4.2	3.3-4.8
8	1.0-1.1	1.1-1.3	1.5-1.7	2.1-2.2	2.1-2.3	2.4-2.5	2.4-2.5	2.5-3.5	2.5-3.5	2.5-3.5	3.0-4.0
10	0.75-0.85	0.9-1.0	1.2-1.4	1.5-1.7	1.8-2.0	2.2-2.3	2.2-2.3	2.2-2.7	2.2-2.7	2.2-2.7	2.5-3.5
12	0.6-0.65	0.8-0.9	1.0-1.1	1.2-1.4	1.5-1.6	1.9-2.0	1.9-2.0	1.2-2.1	1.2-2.1	1.2-2.1	1.5-2.5
14		0.6-0.7	0.9-1.0	1.0-1.1	1.2-1.4	1.2-1.5	1.5-1.7	1.7-1.9	1.7-1.9	1.1-1.9	1.3-2.0
16		0.5-0.6	0.8-0.85	0.85-0.9	0.85-0.95	0.8-0.9	0.85-1.3	0.9-1.7	0.9-1.7	0.9-1.7	1.0-2.0
18			0.7-0.75	0.7-0.75	0.9-1.0	0.7-0.8	0.7-0.8	0.65-0.9	0.65-0.9	0.65-0.9	0.7-1.5
20			0.55-0.6	0.6-0.65	0.65-0.7	0.6-0.65	0.6-0.65	0.6-0.9	0.6-0.9	0.6-0.9	0.7-1.3
22				0.5-0.55	0.55-0.6	0.55-0.6	0.55-0.6	0.5-0.8	0.5-0.8	0.5-0.8	0.6-1.1
25				0.45-0.5	0.45-0.5	0.5-0.55	0.5-0.55	0.3-0.7	0.3-0.7	0.3-0.7	0.5-0.9
30						0.3-0.5	0.3-0.7	0.3-0.7	0.3-0.7	0.25-0.35	0.4-0.7
35							0.37-0.38	0.3-0.4	0.30	0.30	0.35
40							0.25-0.26	0.25-0.35	0.30	0.30	0.33
45								0.2-0.25	0.25	0.30	
50									0.20	0.25	
60										0.20	

Material: Stainless Steel (SUS304)

Thickness	1000W	1500W	2000W	3000W	4000W	6000W	8000W	10000W	12000W	15000W	20000W
	Speed m/min	Speed m/min	Speed m/min	Speed m/min	Speed m/min	Speed m/min	Speed m/min	Speed m/min	Speed m/min	Speed m/min	Speed m/min
1	28-32	32-35	35-41	38-42	40-45	45-47	55-60	60-75	70-85	72-85	80-92
2	6-7	9-10	14-15	20-30	32-35	35-37	37-40	40-55	50-66	52-70	55-75
3	2.8-3.0	4.2-4.5	6.5-7.0	13.5	14-17	18-20	21-23	27-38	33-45	38-50	45-58
4	0.9-1.2	2.1-2.3	3.5-4.0	5.0-6.5	6.5-7.0	14-15	15-17	18-25	22-32	25-35	30-40
5	0.8-0.9	1.6-1.8	2.0-2.2	3.0-4.5	4.8-5.0	8-10	11-12	15-22	18-25	20-30	25-36
6	0.5-0.6	1.0-1.2	1.3-1.5	3.5	4.5	6.0-6.5	8-10	12-15	15-21	18-25	22-35
8		0.5-0.6	0.7-0.8	1.6	2.0	4.0-4.2	5-6	8-12	10-16	12-18	15-20
10			0.55-0.60	0.8	1.4	1.8-2.0	3.8-4.1	6-8	8-12	10-15	12-18
12				0.6	0.9	1.1-1.3	1.7-2.2	3-5	6-8	8-10	9-15
14					0.4	0.9-1.0	1.1-1.7	1.8-3.0	3-5	3.5-6.0	5-12
16						0.8-0.85	1.1-1.3	1.7-2.1	2.5-4.5	3.0-5.5	4-9
18						0.6-0.7	0.9-1.2	1.3-2.0	2.0-3.8	2.5-4.0	3-7
20						0.5-0.6	0.7-0.9	1.2-1.8	1.8-3.0	2.0-3.5	2.5-5.0
25							0.2-0.4	0.6-0.7	1.2-1.8	1.5-2.0	2-4
30								0.5-0.6	0.6-0.7	0.8-1.0	1-2
35								0.45-0.55	0.50-0.65	0.7-0.9	0.9-1.2
40								0.4-0.5	0.5-0.6	0.6-0.8	0.7-1.0
45									0.35-0.45	0.5-0.7	0.6-0.8
50									0.30-0.55	0.3-0.6	0.5-0.7
60										0.2	0.4-0.5
70										0.1	0.3
80											0.2
90											0.1

Material: Aluminium

Thickness	1000W	1500W	2000W	3000W	4000W	6000W	8000W	10000W	12000W	15000W	20000W
	Speed m/min	Speed m/min	Speed m/min	Speed m/min	Speed m/min	Speed m/min	Speed m/min	Speed m/min	Speed m/min	Speed m/min	Speed m/min
1	19-21	20-28	25-30	30-33	35-37	50-52	55-60	60-75	70-85	70-85	75-90
2	4.5-5.0	8-9	8-12	10-15	15-17	28-29	37-40	33-45	38-50	40-55	50-65
3	1.8-2.0	3.8-4.2	5.5-6.0	5.5-5.9	6.5-7.0	15-17	21-23	25-35	30-40	35-45	45-58
4		2.0-2.2	2.5-3.0	2.8-3.2	4.5-4.8	9-10	15-17	21-30	25-38	30-40	40-55
5		0.8-1.0	1.5-2.0	2.0-2.2	3.8-4.2	6.0-6.5	11-12	13-20	15-25	20-30	25-35
6			0.6-0.8	0.7-0.8	2.0-2.2	4.5-5.0	7-8	9-12	13-18	15-24	21-33
8					1.0-1.2	2.8-2.9	3.5-4.0	4.5-8.0	9-12	11-15	18-28
10					0.5-0.6	1.9-2.0	2.3-2.7	4-6	4.5-8.0	6-10	12-20
12						1.1-1.2	1.5-2.0	2.2-3.0	4-6	5-8	9-15
16						0.5-0.6	0.9-1.1	1.5-2.0	2.2-3.0	2.5-3.5	5-9
20							0.7-0.9	1.0-1.6	1.5-2.0	2.0-2.5	3.0-5.5
25							0.4-0.7	0.7-1.0	1.0-1.6	1.2-2.0	2.1-4.8
30							0.3-0.6	0.5-0.7	0.7-1.0	1.0-1.8	1.5-3.0
40									0.3-0.7	0.7-1.2	1.2-2.0
50										0.3-0.7	1.0-1.6
60											0.9-1.3
65											0.5-0.8

Material: Brass

Thickness	1000W	1500W	2000W	3000W	4000W	6000W	8000W	10000W	12000W	15000W	20000W
	Speed m/min	Speed m/min	Speed m/min	Speed m/min	Speed m/min	Speed m/min	Speed m/min	Speed m/min	Speed m/min	Speed m/min	Speed m/min
1	16-18	25-27	31-35	35-40	45-55	55-60	65-75	75-85	75-85	80-95	
2	3.0-3.5	7-8	8-10	10-12	12-14	25-35	37-40	33-45	38-50	40-55	60-85
3	1.1-1.3	2.7-3.0	5.5-6.0	4.5-5.0	6.5-6.8	17-20	21-23	25-40	30-50	32-50	45-68
4		1.5-1.7	2.5-3.0	3.0-3.5	4.5-4.7	10-12	15-17	15-24	25-33	27-35	35-50
5			1.8-2.0	2.8-3.0	3.8-4.2	7-8	11-12	9-15	15-24	18-26	25-35
6			0.9-1.1	1.0-1.2	1.3-1.5	5-6	7.3-7.5	7-9	10-18	10-18	20-30
8				0.5-0.7	0.7-0.8	2-3	3.5-3.8	4.5-6.5	4.5-6.5	8-10	15-23
10						1.6-2.0	2.3-2.5	2.4-4.0	2.8-4.2	5-7	10-18
12						1.3-1.7	1.5-1.9	1.5-2.2	1.0-1.8	2.8-4.2	8-12
14						0.8-1.0	1.0-1.1	0.6-0.8	0.8-1.5	1.0-1.8	5-8
16						0.5-0.6	0.9-1.0	0.4-0.6	0.6-0.8	0.5-1.5	2.0-4.0
18							0.7-0.8	0.3-0.5	0.4-0.6	0.6-0.8	1.0-1.5
20									0.3-0.5	0.4-0.6	0.8-1.0
25										0.3-0.5	0.6-0.8
30											0.4-0.6
35											0.3-0.4

EXHIBITION



EXHIBITION



EXHIBITION



EXHIBITION



Exhibition



Installations



Bhilwara



Gujrat



Cuttak Odisha



Sikar



Jodhpur



Angul Odisha



Rajotha Khetri



Sardarsahar



No Matter how 
TOUGH A MATERIAL IS, OUR
Machines are **Tougher!**

Head office:

Aaradhana Technology Systems

Address: Khasra No. 214. Kharbaso Ki Dhani,
Jayshingpura Road, Bhankrota. Asian World School,
Jaipur, Rajasthan, 302026

Aaradhana Machineries PVT LTD

Address: Khasra No. 214. Kharbaso Ki Dhani,
Jayshingpura Road, Bhankrota. Asian World School,
Jaipur, Rajasthan, 302026

Branch office:

Plot No 897 Barang, Bidyadharpur,
Cuttack, Odisha 754005

 Info@aaradhanatech.com

 www.aaradhanatech.com



+919982378192